

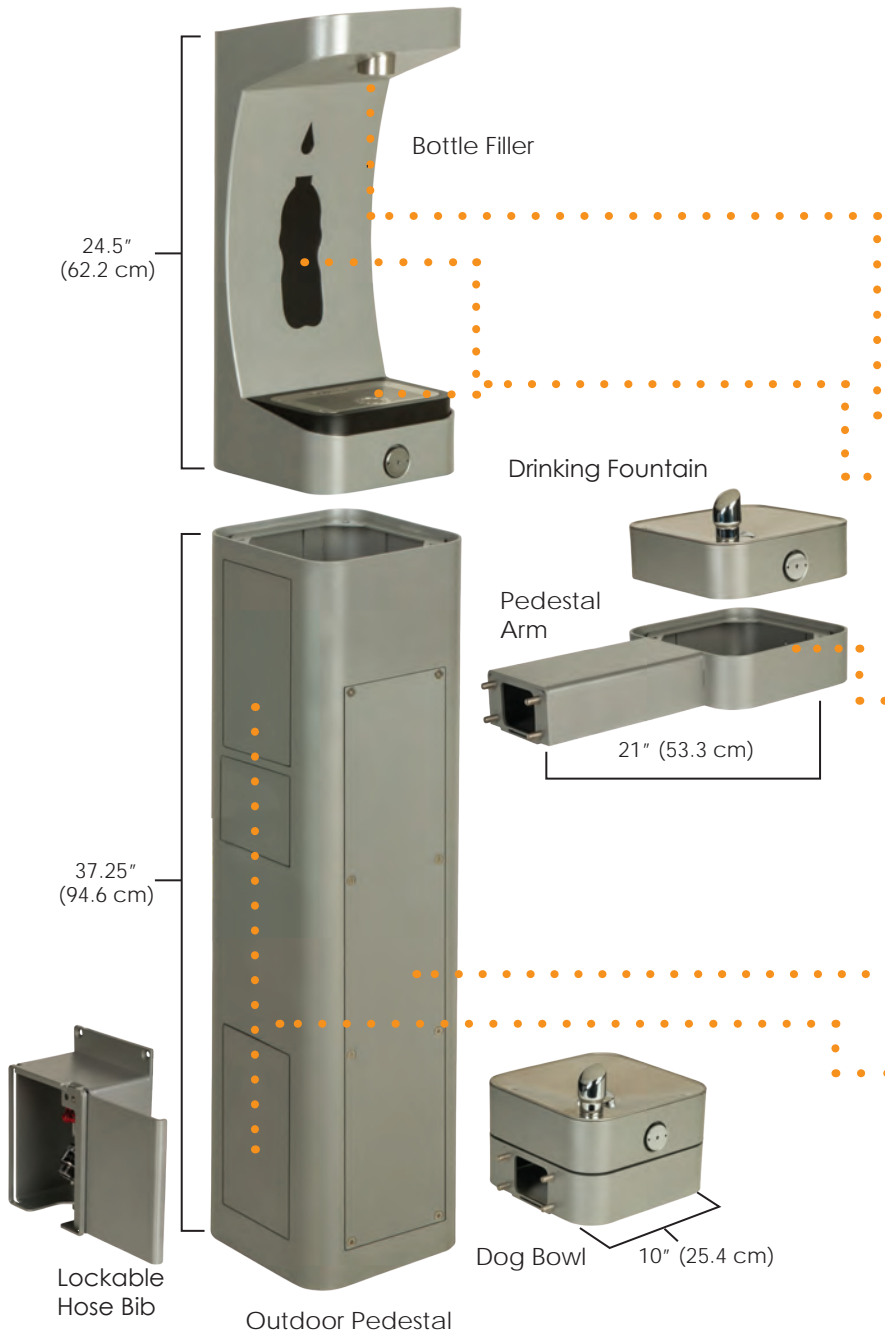


## OUTDOOR BOTTLE FILLER & DRINKING FOUNTAIN

This highly-configurable product comes with ADA-compliant standard models ideal for all outdoor installations, including school campuses, office courtyards, parks and recreational facilities.



# OUTDOOR BOTTLE



## KEY FEATURES:

- Certified by CSA to NSF/ANSI 61, Section 9 and NSF/ANSI 372
- Standard models are ADA compliant
- ADA Accessible dual-height drinking fountains with accessible bottle filler
- Front facing push buttons and front approach
- Laminar, 1 GPM (3.8LPM) flow rate
- Drain pan logo and bottle color customization available
- Interchangeable accessory options
- 100% lead free waterways
- Modular arm design for pre- and in-field placement and variations
- Base pedestal is equipped with four hydration placement options and three lower accessory options
- Easy installation with convenient access to internal plumbing
- Top-down drain access for easy cleaning and maintenance
- Stainless steel with silver matte powder-coated exterior for an aesthetically appealing look that will withstand the elements
- Freeze-resistant (FR) options to maintain functionality in cold weather environments
- Competitive pricing with multiple configuration options
- Environmentally-friendly hydration solution for reduced plastic consumption

## STANDARD COLOR



# FILLER and DRINKING FOUNTAIN



## STANDARD MODEL CONFIGURATIONS



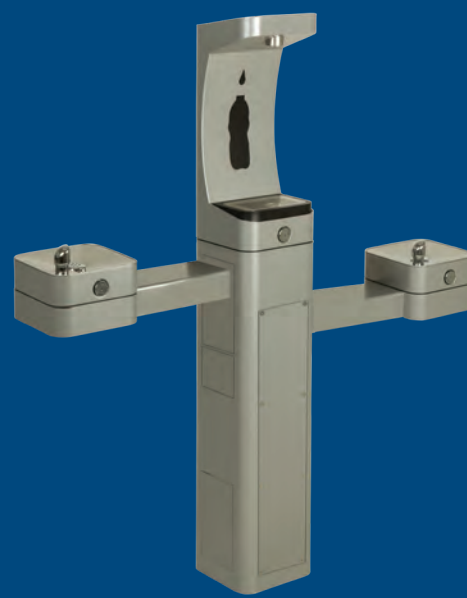
**Model 3602**  
Outdoor ADA  
pedestal with two  
drinking fountains



**Model 3610**  
Outdoor ADA  
pedestal with  
one bottle filler



**Model 3611**  
Outdoor ADA pedestal  
with one bottle filler  
and one drinking fountain



**Model 3612**  
Outdoor ADA pedestal  
with one bottle filler  
and two drinking fountains

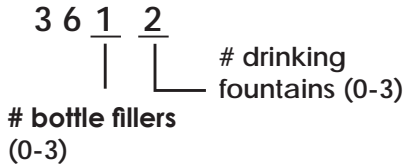




# MODEL CONFIGURATOR

Complete your configuration by selecting a standard model or configuring your own combination of accessories. Both sides, the back, and the top of the modular pedestal can have accessories.

## MODEL EXAMPLE



## CONFIGURATION EXAMPLES



Model 3602  
Outdoor ADA pedestal  
with two drinking fountains



Model 3612  
Outdoor ADA  
pedestal with  
one bottle  
filler and  
two drinking  
fountains

## MODEL

## QUANTITY

- |   |       |
|---|-------|
| <input type="checkbox"/> Model 3602               | _____ |
| <input type="checkbox"/> Model 3602FR*            | _____ |
| <input type="checkbox"/> Model 3610               | _____ |
| <input type="checkbox"/> Model 3610FR*            | _____ |
| <input type="checkbox"/> Model 3611               | _____ |
| <input type="checkbox"/> Model 3611FR*            | _____ |
| <input type="checkbox"/> Model 3612               | _____ |
| <input type="checkbox"/> Model 3612FR*            | _____ |
| <input type="checkbox"/> Model 36_ _-__ (Special) | _____ |

\*Requires additional bury valves and underground installation materials (not included). See Installation & Operation Manual for details)

## ACCESSORIES

## QUANTITY

- |  |       |
|--|-------|
| <input type="checkbox"/> Dog Bowl, Model 3670          | _____ |
| <input type="checkbox"/> Hose Bib, Model 3661          | _____ |
| <input type="checkbox"/> Lockable Hose Bib, Model 3660 | _____ |

## CUSTOMIZATION

Drain plate, bottle icon, and color customization options available. Contact Customer Service for details.

Submit completed form to Haws Customer Service:  
customerservice@hawsc.com or fax: 775-359-7424.

Name \_\_\_\_\_

Company \_\_\_\_\_

Email \_\_\_\_\_

Phone \_\_\_\_\_

