

Form **and**
Function.
Finally.

Introducing the
All-New **EWC 1200**



 **Haws**[®]

e economical

A competitive price point with unmatched design features backed by quality you'd only expect from Haws®, the EWC is essential to any new construction or retrofit project.



W workable

Ease of installation and maintenance entice beyond its attractive, durable design. Built-in energy saving features, and wear-resistant materials and components make the EWC the obvious choice.



C contemporary

The clean lines are merely the visible cutting-edge features with the most creative innovations inside the contemporary shell. From the proprietary electronics that drive the intuitive LED display, to the accessible configuration of the internal mechanics, this unit captivates as it outperforms the competition.



Introducing The EWC 1200

The New Standard in Electric Water Coolers and Standalone Bottle Fillers



- Integral anti-microbial properties
- Anti-rotational bubbler head to help prevent vandalism
- Industry-leading bottle fill rate (1.1 gpm)
- Integral laminar flow technology
- Patent-pending enhanced tankless water cooler for consistently cooled water during use
- Patent-pending, self-leveling mounting system ensures flush alignment every time
- Enhanced electronics to ensure filtered water at every activation *(for filtered units only)*

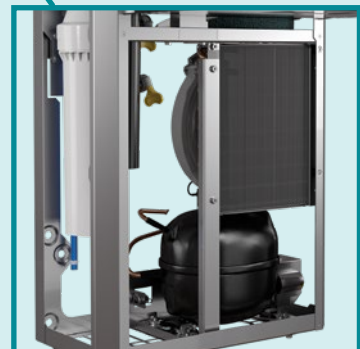
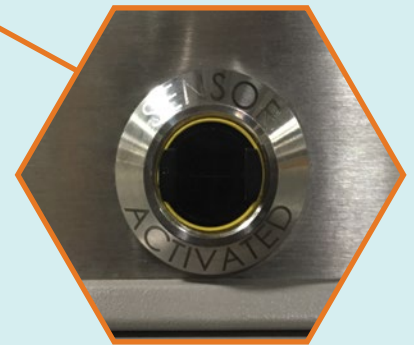
- Carbon block filter cartridge
- Service life: 1 year or 3,000 gallons(11356L)
- 100% Lead-free waterways



- Large clearances make filter replacement and maintenance easy
- Designed with retrofit capabilities
- Smart energy saving capability is standard *(filtered and bottle filler units)*
- Quiet Operation



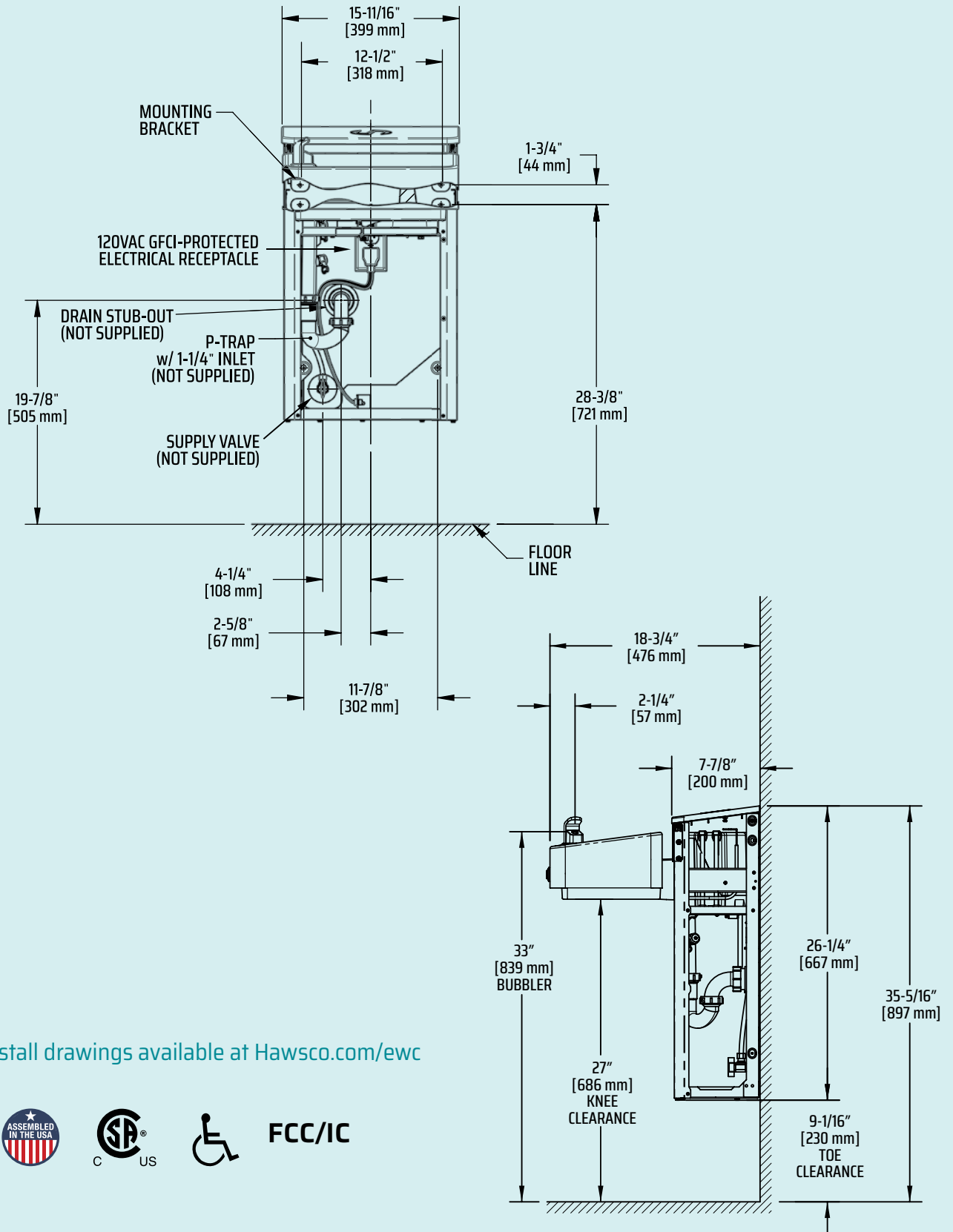
- Intuitive LED display with sensor activation and easy maintenance notification and controls
- Durable stainless steel body and fountain
- Lighted bottle filler dispenser
- Sensor activation drinking fountain



Install Drawing

Typical Single/Low Unit

Universal Design for Universal Access



Full install drawings available at Hawesco.com/ewc



FCC/IC

Quality that delivers. Design that captivates.

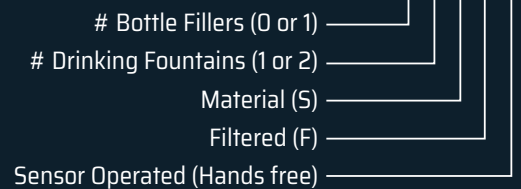
Haws has a well-earned reputation for designing and manufacturing the highest quality hydration products in the industry. And with the introduction of the EWC 1200 series, we're building on that reputation for the future.

Essential to any project.

Designed with the installer in mind, the unit provides large clearances inside to allow for easy installation, filter replacement, and maintenance. The EWC is the only water cooler that combines a self-adjusting flow control with a laminar flow insert in the bubbler head nozzle. In addition, certain models have standard features that would be costly upgrades for other companies, including stainless steel finish, energy savings mode, LED electronic display, and bottle filler light. All of these features make the EWC the most economical and modern choice on the market.

EWC Product Configurator

MODEL EXAMPLE: 1 2 1 1 S F H



Model **1212SFH**

Hi-lo, stainless steel, sensor-operated, filtered electric water cooler with bottle filler



Model **1211SFH**

Single, stainless steel, sensor-operated, filtered electric water cooler with bottle filler



Model **1202SFH**

Hi-Lo, stainless steel, sensor-operated, filtered electric water cooler



Model **1201SFH**

Single, stainless steel, sensor-operated, filtered electric water cooler



Model **1210SF**

Single, stainless steel, sensor-operated, filtered bottle filler with electric cooler

All models have non-sensor and non-filter options

