

## FEATURES & BENEFITS

### QUALITY CONTROL

Fully assembled and tested for quick placement and hook-up.

### STANDARDIZED PLATFORM

Offering a standardized line of water tempering solutions providing shorter lead times, advanced compliance, cost efficiencies, and customizable configuration options.

### BLENDING SYSTEM

Safe, fully engineered thermostatic mixing valve for mixing large volumes of hot and cold water guarded with anti-scald protection and full flow cold water bypass to provide tempered water in adverse situations.

### TANK SYSTEM OPTIONS

Tanks available: 119 Gal non-ASME (450 L), 120 Gal (454 L) ASME, or 200 Gal (757 L) ASME that will store enough hot water to provide a single 15 minute shower and eye/face wash use. Also available in ASME is a 318 Gal (1203 L) or 400 Gal (1514 L) that stores enough hot water to provide two 15 minute shower and eye/face wash uses before tank recovery is required.

### EXPANDABLE/FLEXIBLE CAPABILITIES

System can be designed to a number of variations including the hot water supply, the electrical type, the blending capabilities, and pump options including VFD controlled pump.

### ELECTRICAL SYSTEM OPTIONS

Haws provides systems at various voltage options, including 480V 3ph, 600V 3ph, 208V 1ph, 208V 3ph, 240V 1ph, and 240V 3ph. Electrical area rating options include Type 4 Ordinary Location and Hazardous Location up to Cl I, DIV 2 B, C, D T3

## OPTIONS

Optional equipment to accommodate virtually any specific need includes:

- Temperature control packages including 4 or 10 kW immersion heaters, integrated space heater
- Alarm package
- Stainless steel valves and/or piping
- Recirculation pump or booster/recirc pump



## SPECIFICATIONS

Model 8785 ePOD™ enclosed tempering system shall include an all-weather 5' x 5' (1.52 x 1.52m) booth which provides optional operating temperature ranges of -50° to 120° F (-45.5° to 49.8° C), and is constructed of corrosion resistant aluminum paneling with polyester based powder coating. This single or multiple shower and/or eyewash tempering water unit with galvanized piping is designed to operate with a number of tempering and electrical options. Standard hook-up is a 480V, three phase inlet inside a NEMA4 enclosure. The internal booth temperature can be maintained by an optional space heater. The tank water temperature is maintained by an immersion heater. The electrical system can be easily adapted to voltages upon request. The 8785 tempering booth utilizes the Haws Tempered Water Blending System to provide tempered water under dire situations, and incorporates fail-safe features like anti-scald protection and full flow cold water bypass in the event of hot water failure. 1-1/2" tepid and cold water inlets.

## APPLICATIONS

Perfect for outdoor facilities that may encounter dangerous chemical hazards and need a complete tempering system, and/or need a feeder to other remote booth substations or other drench systems and/or eyewash stations. Model is CSA certified for Ordinary and Hazardous Locations for North America. For the electrical certification, the system is certified by accredited Certification Body.

REVISIONS			
REV	DESCRIPTION	ECN	DATE BY
1	INITIAL RELEASE	5569	9/15/20 TM

NOTES:

1. DIMENSIONS IN INCHES.  
2. ALL TOLERANCES:  $\pm 1/2$ "  
3. ESTIMATED WEIGHT.  
4. DRY: 1300 LB  
WET: 4000 LB  
5. AREA CLASSIFICATION: ORDINARY  
6. AVAILABLE AMBIENT TEMPERATURE RANGE: -50°F-120°F  
7. NOT ALL FEATURES ARE STANDARD

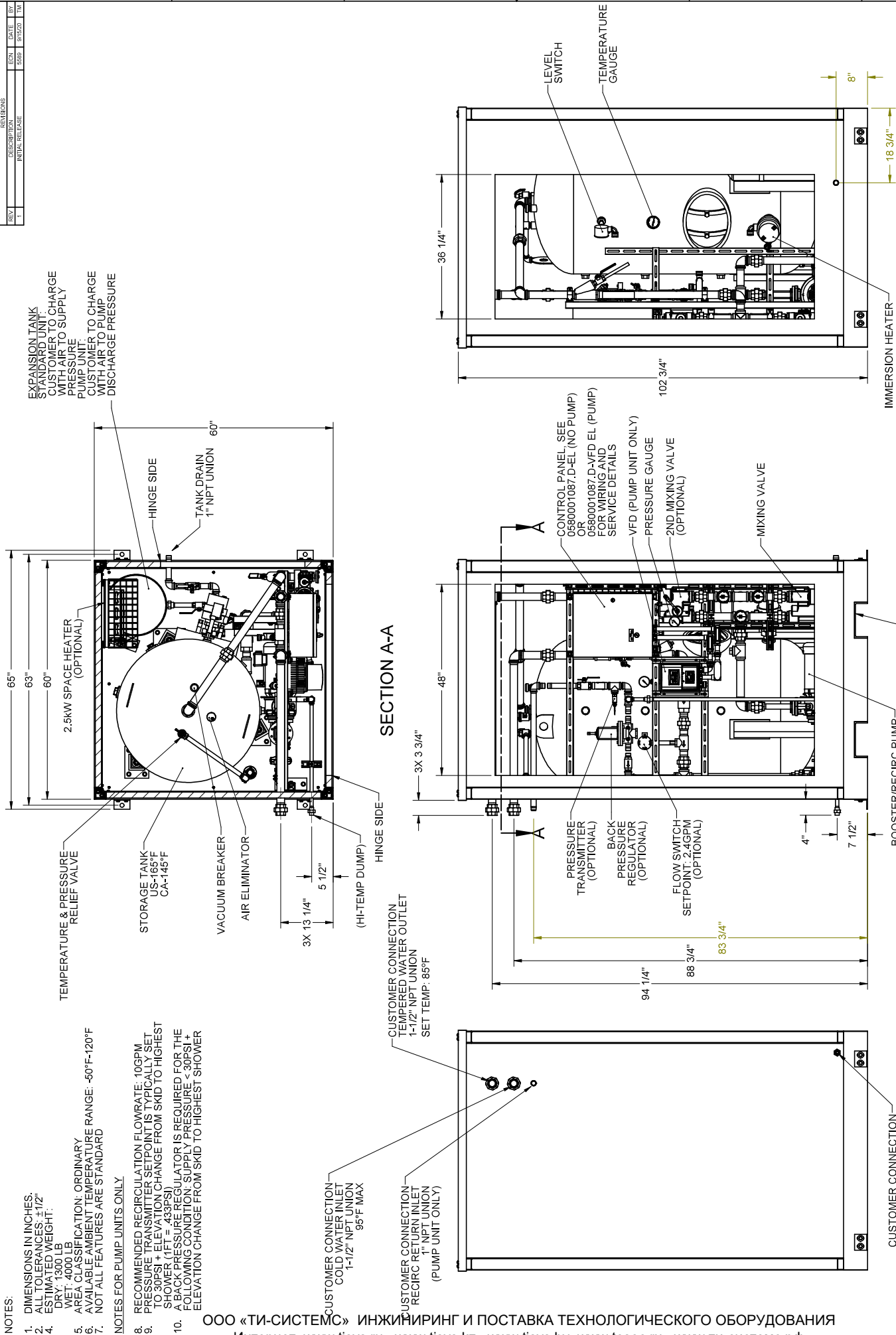
NOTES FOR PUMP UNITS ONLY

8. RECOMMENDED RECIRCULATION FLOWRATE: 10GPM
9. PRESSURE TRANSMITTER SETPOINT IS TYPICALLY SET TO 30PSI + ELEVATION CHANGE FROM SKID TO HIGHEST SHOWER (1FT = .433PSI)
10. A BACK PRESSURE REGULATOR IS REQUIRED FOR THE FOLLOWING CONDITION: SUPPLY PRESSURE < 30PSI + ELEVATION CHANGE FROM SKID TO HIGHEST SHOWER

ООО «ТИ-СИСТЕМС» ИНЖИНИРИНГ И ПОСТАВКА ТЕХНОЛОГИЧЕСКОГО ОБОРУДОВАНИЯ

Интернет: ~~www.tisys.ru~~ ~~www.tisys.kz~~ ~~www.tisys.by~~ ~~www.tesec.ru~~ ~~www.ti-sistemy.com~~

Телефоны: +7 (495) 7774788, 7489626, (925) 5007155, 54, 65 Эл. почта: [info@tisys.ru](mailto:info@tisys.ru) [info@tisys.kz](mailto:info@tisys.kz) [info@tisys.by](mailto:info@tisys.by)



CUSTOMER CONNECTION -  
HI-TEMP DUMP  
1/2" NPT UNION  
>95°F  
(PUMP UNIT ONLY)

BOOSTER/RECIRC PUMP-  
60GPM @ 133' TDH  
0GPM @ 140' TDH  
(PUMP UNIT ONLY)

E111 | LENGTH FORK IFT CHANNEL S-

THE ATTACHED DESIGNS ARE CONSIDERED TRADE SECRETS AND POTENTIALLY PATENTABLE. IN ACCORDANCE WITH CONFIDENTIALITY AND NON-DISCLOSURE AGREEMENT, THESE DESIGNS IN ACTUAL OR CONCEPTUAL FORMS CANNOT BE DISCLOSED, REPRODUCED OR USED WITHOUT HAWKS' EXPRESS WRITTEN CONSENT.

CUSTOMER REF ID #	 <b>Haws®</b> 455 KAPLAN BLVD SPRINGFIELD, MA 01103 USA	TITLE <b>ALL WEATHER EMERGENCY          WATER TEMPERING BOOTH</b>		PROJECT DESCRIPTION  GA Set 1 of 1	
		JOB NUMBER DRAWN BY DRAWN DATE CHECKED BY CHECKED DATE APPROVED BY APPROVAL DATE	NO. OF COPIES REQUIRED FOR PROJECT DRAWING NO. DATE OF ISSUE PROJECT NO. PART NO.	08 06/22/20 06/22/20 06/22/20 06/22/20	06-000001087 D-A REV. 1